



JOB NAME:	CONTRACTOR:
JOB LOCATION:	APPROVAL:
ENGINEER:	CONTRACTOR P.O.:
APPROVAL:	REPRESENTATIVE:

## FPE-8E086

**776032 3-WAY WAFER STYLE, BRACKET MOUNTED, CARBON STEEL DIVERTING BALL VALVE, "L" PORT, TWO SEATS, ANSI CLASS 150, REDUCED BORE WITH FPE ELECTRIC ACTUATOR**

**SIZES 1/2" TO 6"**

\*001 12V AC/DC      \*002 24V AC/DC      \*003 100-240V AC  
 \*01\* BATTERY BACKUP      \*02\* POSITIONER      \*04\* BATTERY BACKUP W POSITIONER

### ACTUATOR FEATURES

The FPE 8E086 series electric actuated package features a short profile, carbon steel, ANSI 150 Class 3-way L port ball valve. The 8E086 electric package has a stainless-steel version of the same.

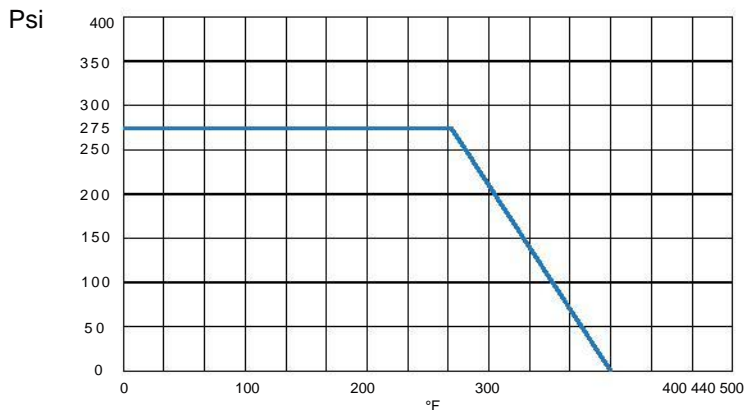
The FPE electric VB series actuator is standardly furnished with dual voltages, two extra limit switches, torque limiter, extended manual over-ride, 75% duty cycle motor, in a IP 67, NEMA 4, 4X technopolymer housing

- NEMA 4, 4X Housing
- CSA, UL approved
- 12V/24V AC/DC and 100-240V AC Models Available
- ISO 5211 dual patterns
- VB015 - 12/24V AC - 50% Duty Cycle
- VB030-VB060 - 12/24V DC and 100-240V AC - 75% Duty Cycle
- High-Strength, Impact Resistant IP67 Technopolymer Housing
- Temperature Range -4°F to 131°F
- PG11 Electrical Connection/Optional 1/2" conduit connection

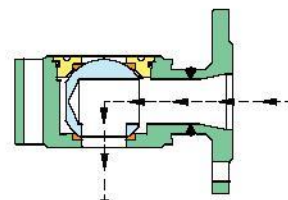
### VALVE FEATURES

- ANSI Class 150, 3-way Diverter L port
- Compact design
- 776032 - Carbon Steel
- 776018 - Stainless Steel
- Sizes 1/2" to 6"
- Temperature range -4° F to 366° F.
- Blow out proof stem.
- R.P.T.F.E. seats, packing and thrust washer.
- 100% tested.
- TUV T.A. Luft approved.
- ISO 5211 mounting pad with double "D" stem

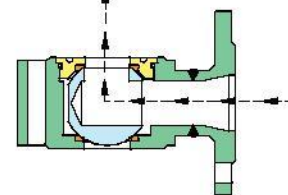
### PRESSURE - TEMPERATURE CHART FOR SERIES 776018/776032



### FLOWPATH

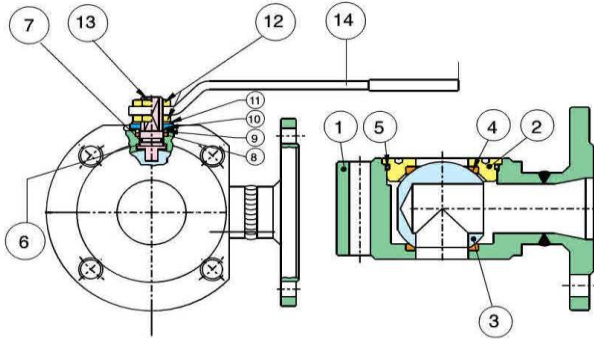


**POSITION A**



**POSITION B**

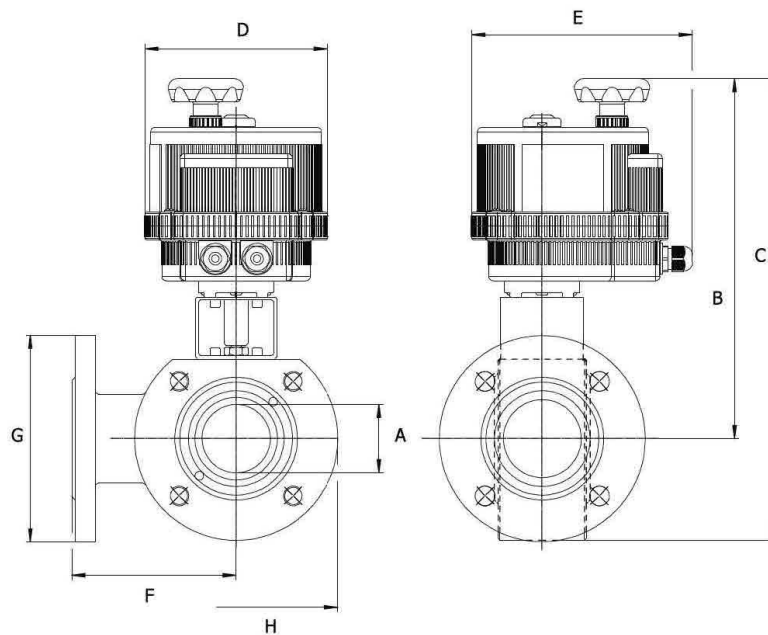
## BILL OF MATERIALS



N POS	PART NAME	MATERIAL	N PCS
1	BODY	ASTM A105 / AISI 316	1
2	END CONNECTION	ASTM A105 / AISI 316	1
3	BALL	AISI 304 / AISI 316	1
4	BALL SEAT	R.P.T.F.E.	2
5	O-RING	FKM (Viton®)	1
6	THRUST WASHER	P.T.F.E.	1
7	O-RING	FKM (Viton®)	1

N POS	PART NAME	MATERIAL	N PCS
8	STEM SEAL	P.T.F.E.	1
9	PACKING GLAND	STEEL	1
10	END STOP	STEEL (1/2" - 2")	2
		STEEL (2-1/2" - 4")	2
11	SPRING WASHER	STEEL	2
12	NUT	STEEL	2
13	STEM	AISI 304 / AISI 316	1
14	HANDLE	STEEL	1

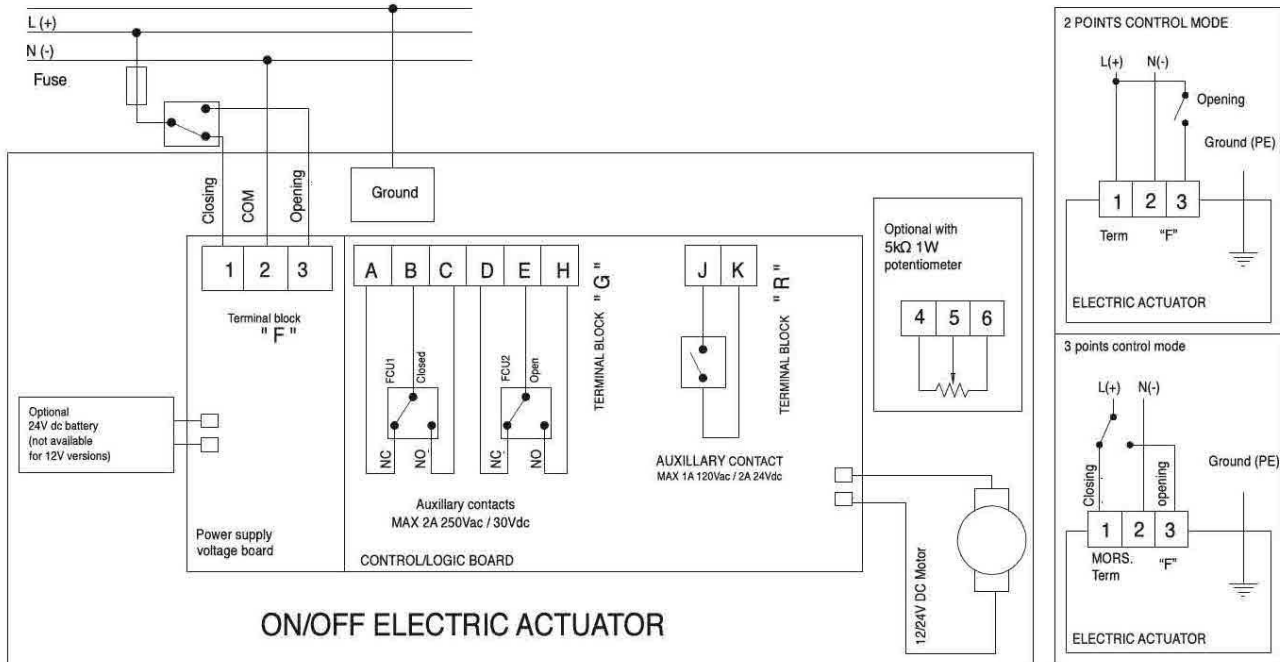
## DIMENSIONS



Size	A	B	C	D	E	F	G	H	Act.
1/2"	0.39	10.50	8.82	4.84	6.46	2.99	3.54	3.54	VB015
3/4"	0.59	10.90	8.98	4.84	6.46	3.23	3.94	3.94	VB015
1"	0.78	13.10	10.90	6.18	7.52	3.39	4.33	4.33	VB030
1-1/4"	0.98	13.60	11.30	6.18	7.52	3.94	4.72	4.72	VB030
1-1/2"	1.26	15.50	12.90	7.28	8.47	4.13	5.12	5.12	VB060
2"	1.57	16.10	13.10	7.28	8.47	4.53	5.91	5.91	VB060
2-1/2"	1.97	18.00	14.50	8.31	9.33	4.92	7.09	7.09	VB110
3"	2.50	18.50	14.80	8.31	9.33	5.91	7.48	7.48	VB110
4"	2.99	20.80	16.30	8.31	9.33	6.26	9.06	9.06	VB190

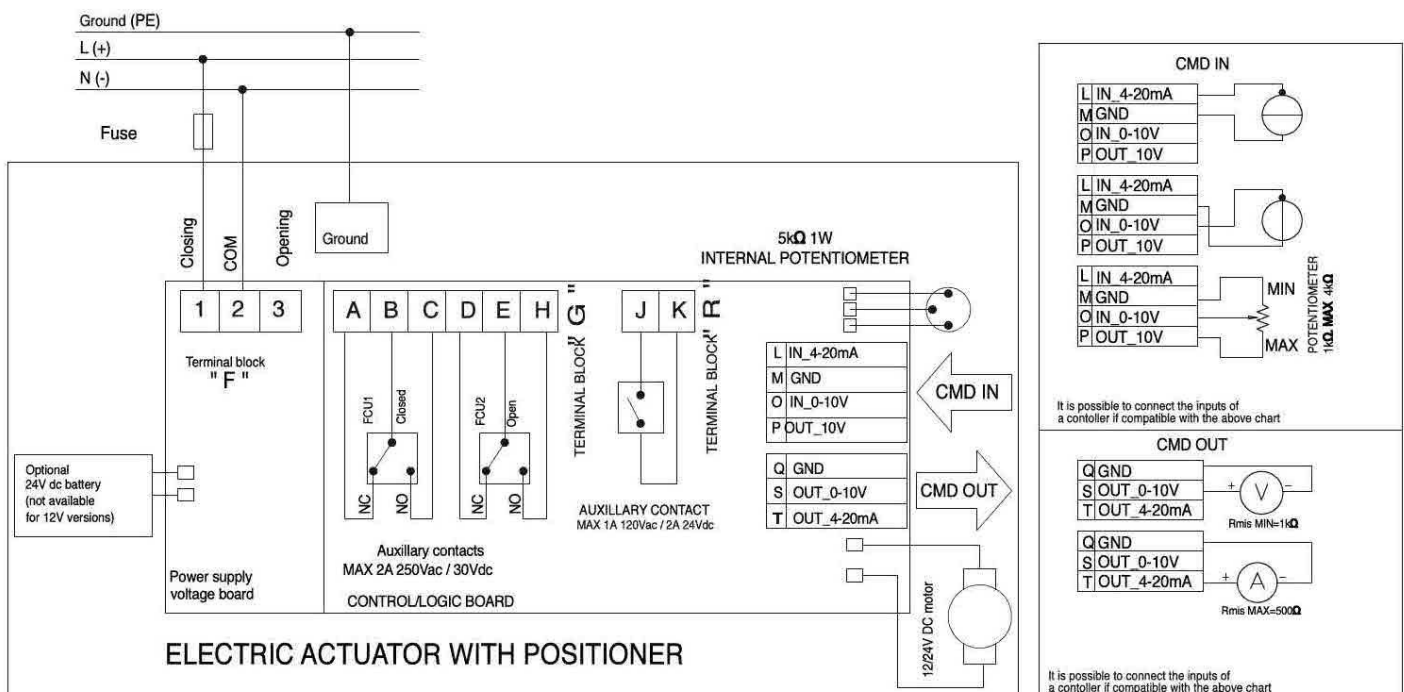
## ON/OFF WIRING DIAGRAM - VB030 -VB190

12V AC/DC, 24V AC/DC & 100-240VAC



## POSITIONER WIRING DIAGRAM - VB030 -VB190

12V AC/DC, 24V AC/DC & 100-240VAC



The power supply COM signal ( pin "2" terminal block "F") cannot share the same electrical command ground signal ( pin "GND" terminal block "CDM IN") or feedback ground signal (pin "GND" terminal block "CDM OUT").